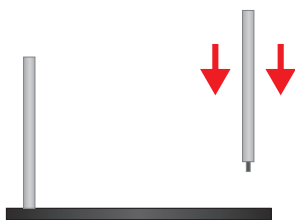
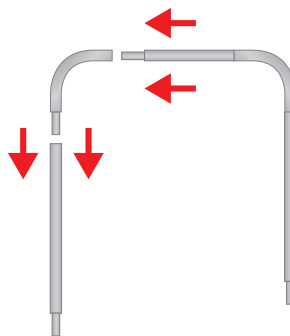


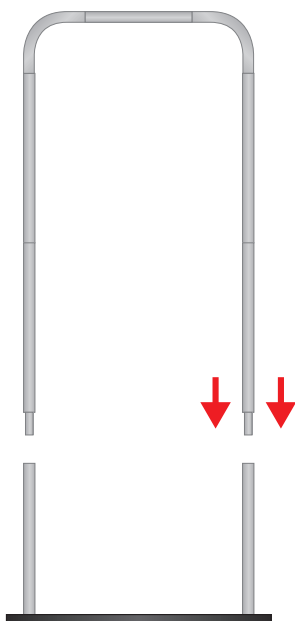
ASSEMBLY INSTRUCTIONS



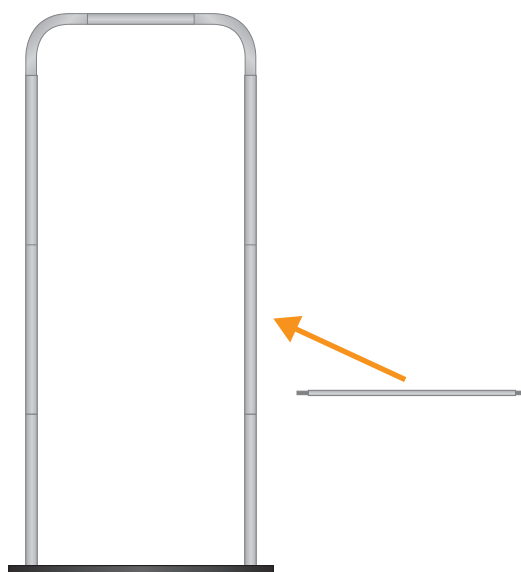
1. I would insert tubing into the pedestal pins of the Totem Soft



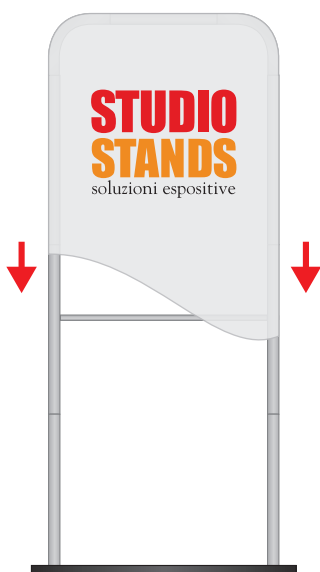
2. Join the tubes together following the numbering of the stickers on them



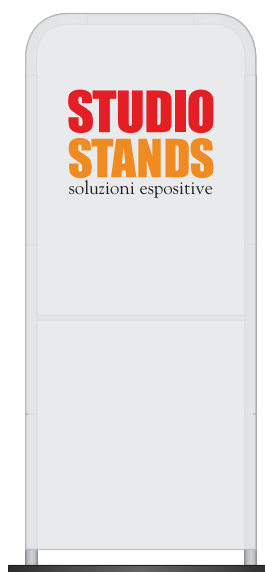
3. Join the interlocking parts together



4. Screw the intermediate crosspiece to ensure greater consistency to the structure



5. Insert the print onto the frame and pull down until tension is complete



youtube.com/StudioStandSrl
for the assembly video tutorial

INDOOR displays / TOTEM SOFT

STUDIO STANDS 
soluzioni espositive & stampa digitale

INFO FILE

Formats:

.eps .pdf .jpg .tiff

Color profile:

CMYK

Images:

included within the file at at least 100dpi resolution in 1:1 scale or 1000dpi for 1:10 scale works

Fonts:

converted into paths

Die path:

Keep ONLY the outermost path - all other paths must be removed

Crop marks/register/color bars/file info:

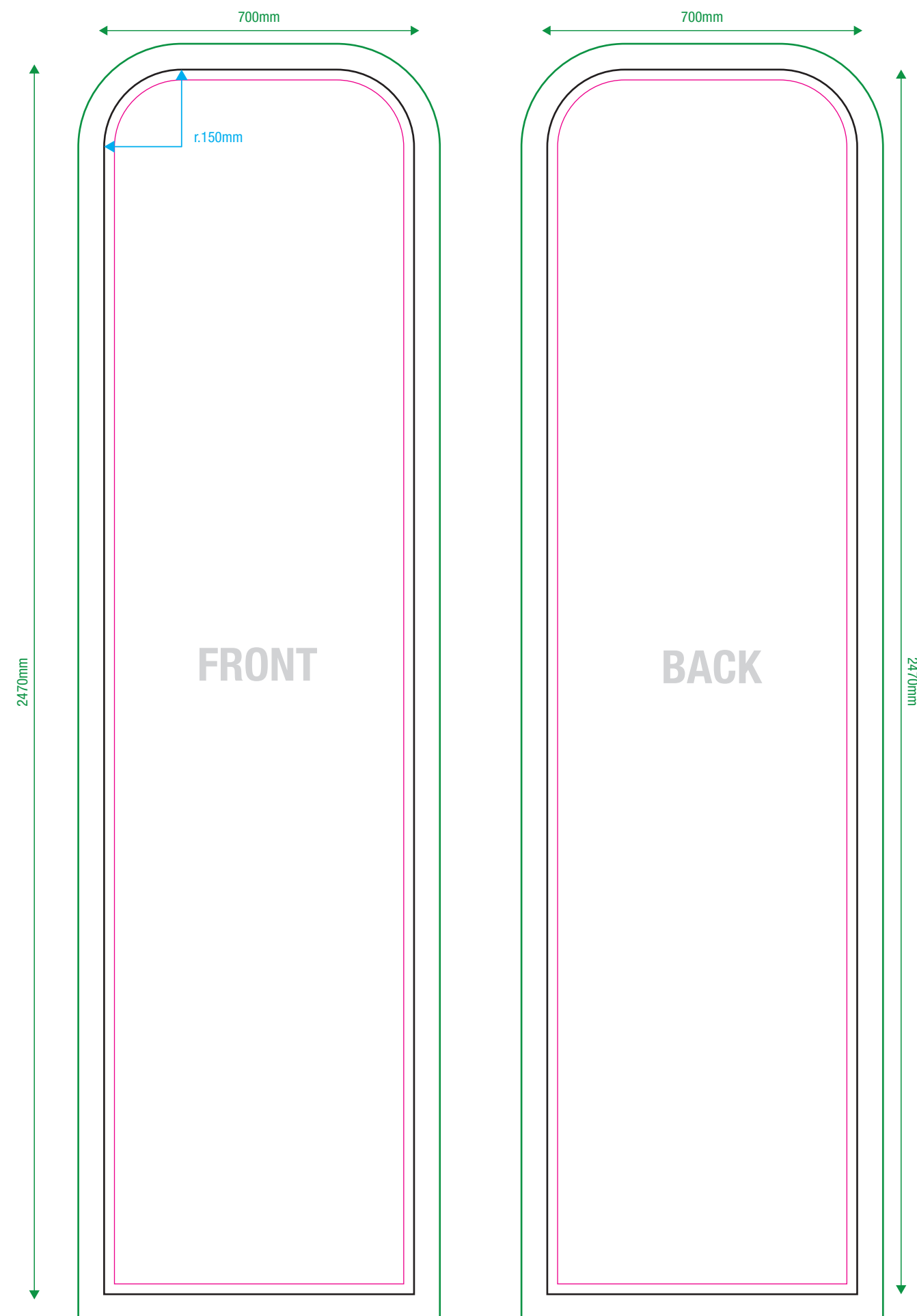
DO NOT insert inside the file

———— **ABUNDANCE**

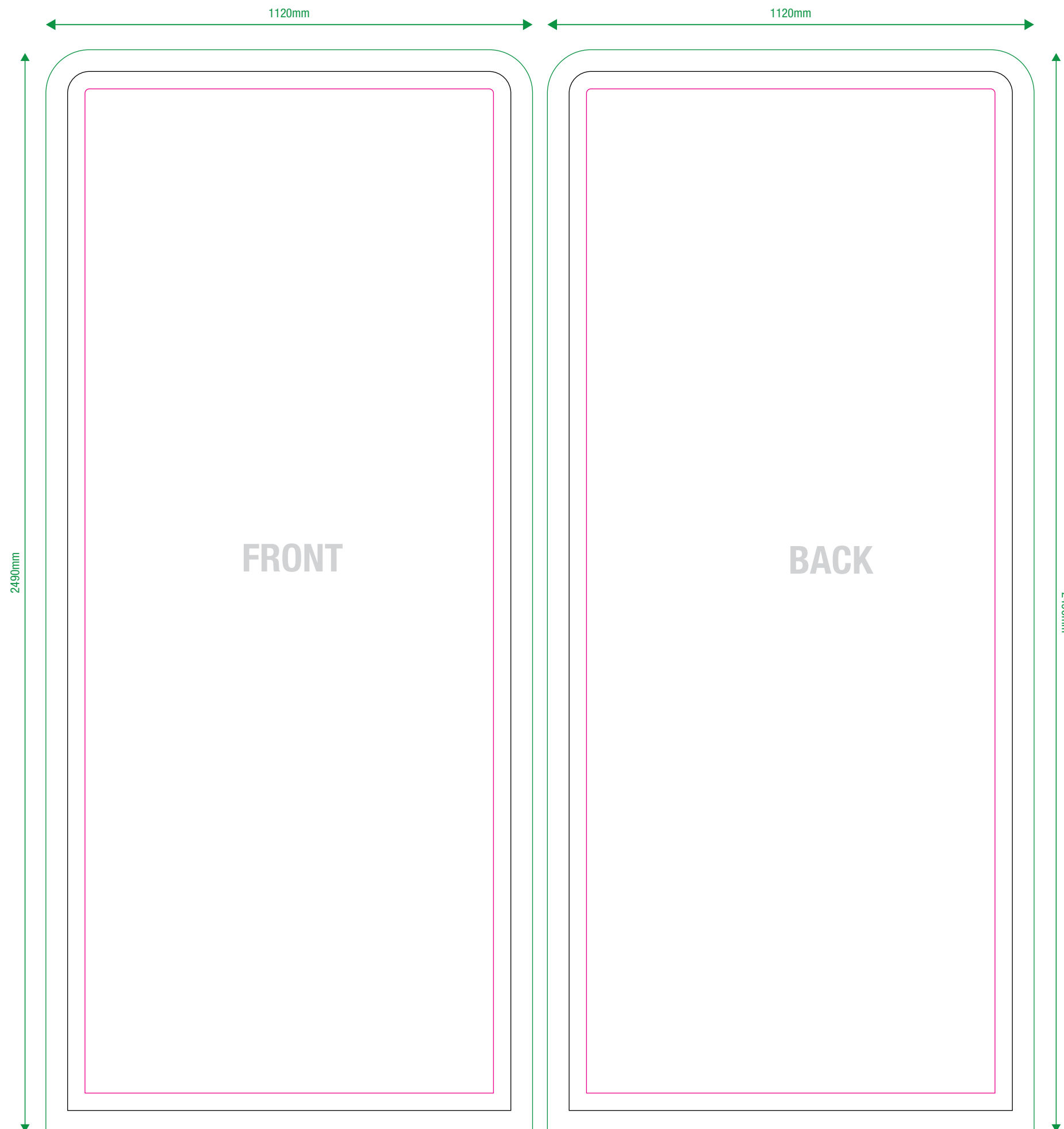
———— **CUT**

———— **SAFETY MARGIN**
(Do not place important content beyond this margin)

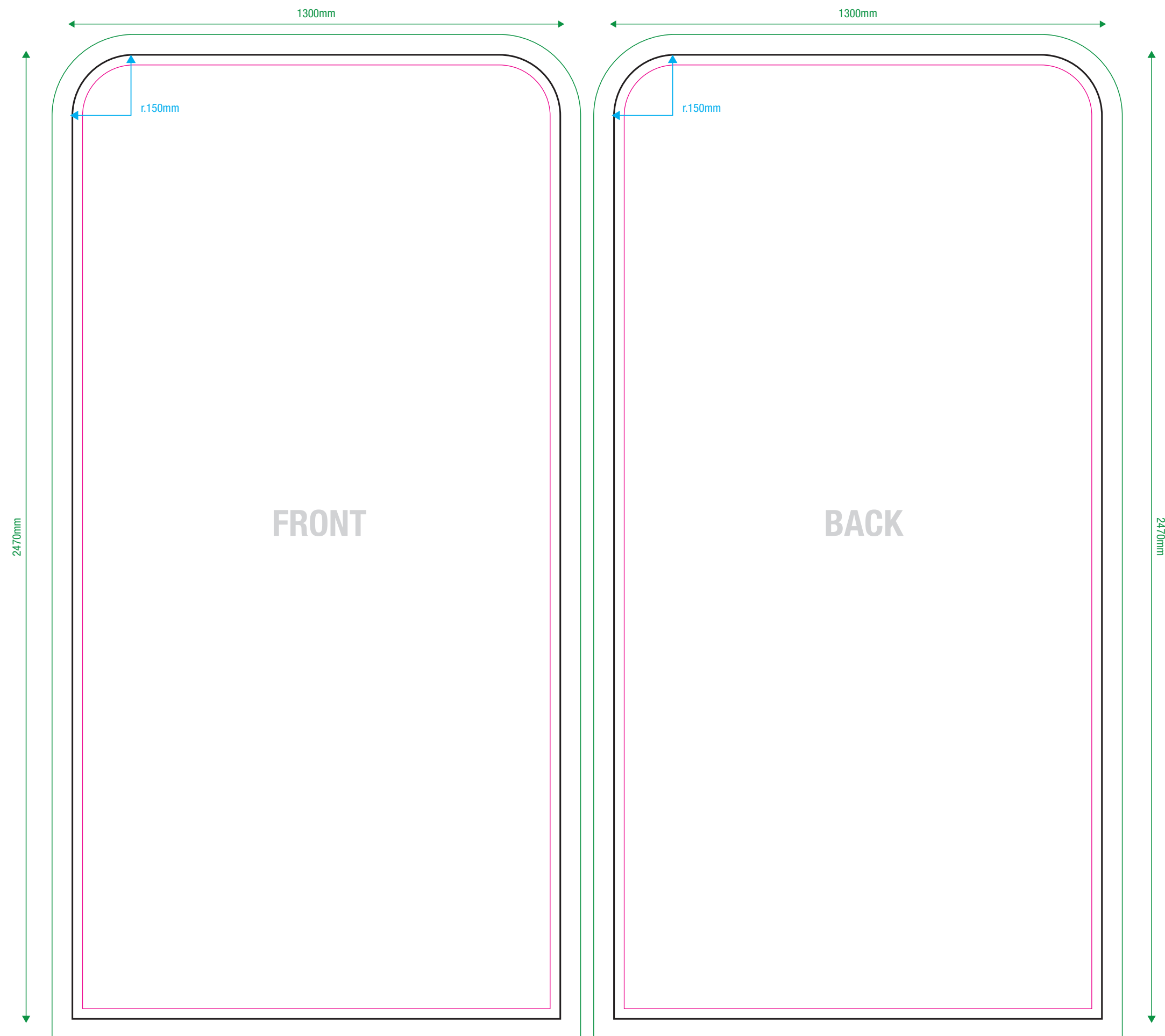
TRACKS IN 1:10 SCALE



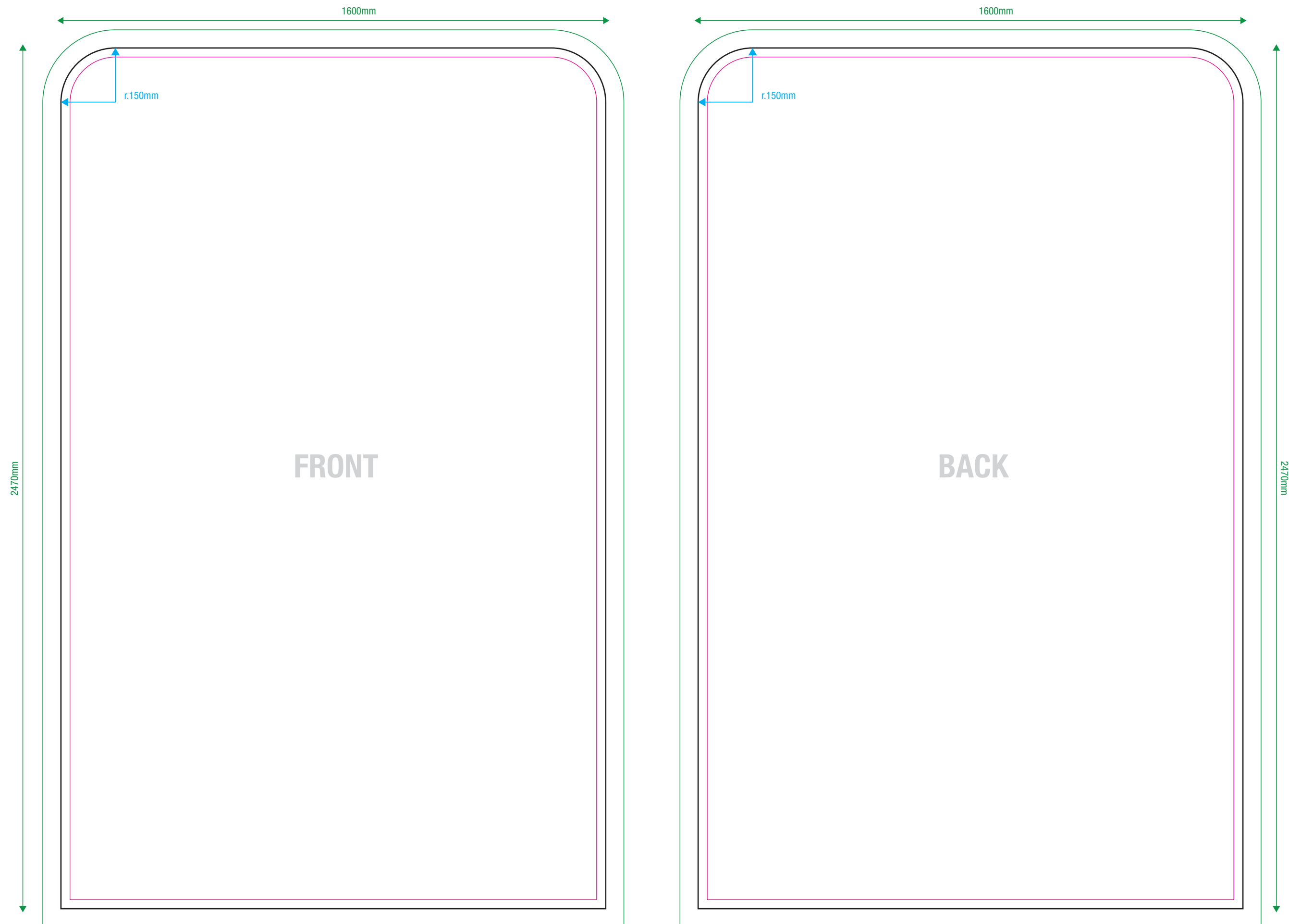
TRACKS IN 1:10 SCALE



TRACKS IN 1:10 SCALE



TRACKS IN 1:10 SCALE



TRACKS IN 1:10 SCALE

