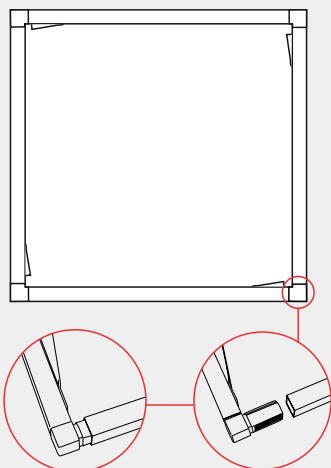


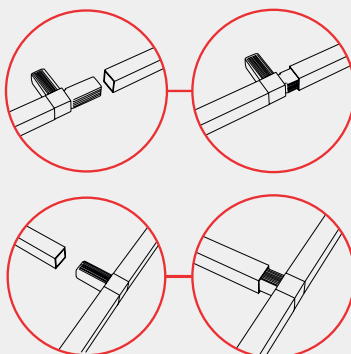
ASSEMBLY INSTRUCTIONS

1

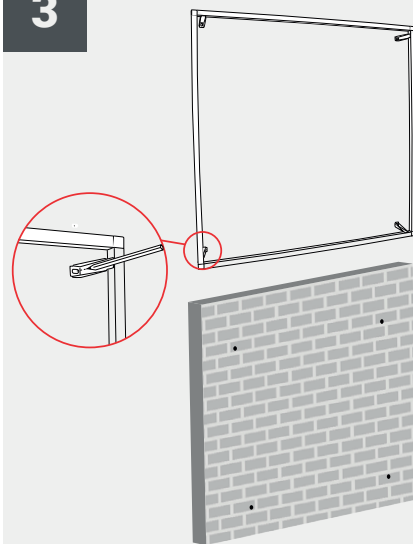


2

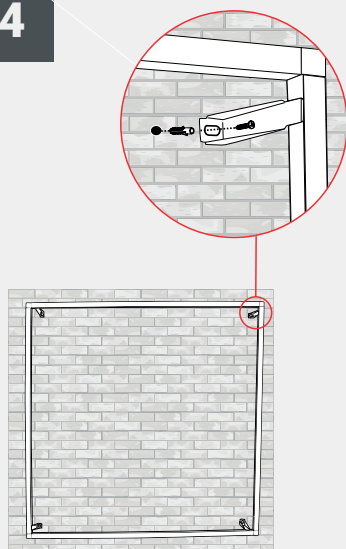
Required only in the mounting
of large wall frame



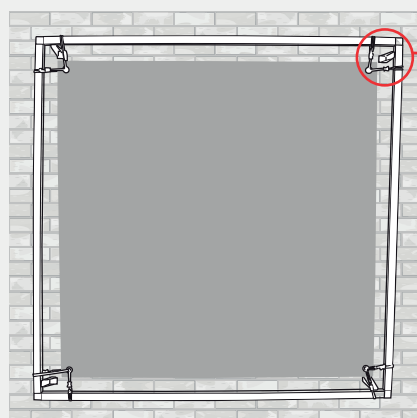
3



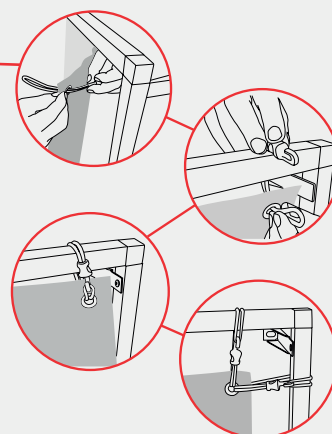
4



5



6



SPOT - 3000MM SCALE 1:10

Formats:
.eps .pdf .jpg .tiff
Color profile:
CMYK
Images:
included within the file at at least 100dpi resolution in 1:1
scale or 1000dpi for 1:10 scale works
Fonts:
converted into paths
Die path:
Keep ONLY the outermost path - all other paths must be
removed
Crop marks/register/color bars/file info:
DO NOT insert inside the file

ABUNDANCE
CUT
SAFETY MARGIN
(Do not place important content beyond this
margin)

SPOT - 1250MM SCALE 1:10

Formats:
.eps .pdf .jpg .tiff
Color profile:
CMYK
Images:
included within the file at at least 100dpi resolution in 1:1
scale or 1000dpi for 1:10 scale works
Fonts:
converted into paths
Die path:
Keep ONLY the outermost path - all other paths must be
removed
Crop marks/register/color bars/file info:
DO NOT insert inside the file

ABUNDANCE
CUT
SAFETY MARGIN
(Do not place important content beyond this
margin)