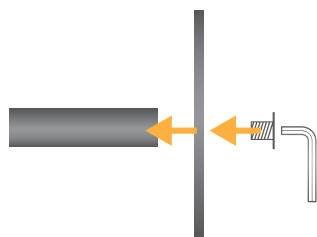


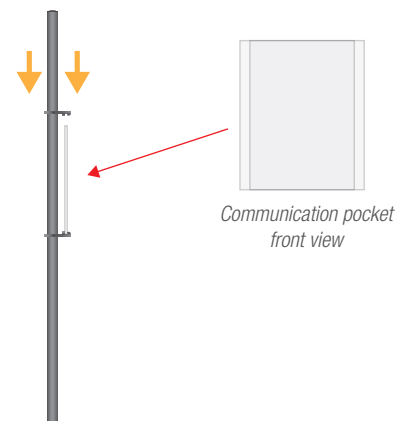
ASSEMBLY INSTRUCTIONS



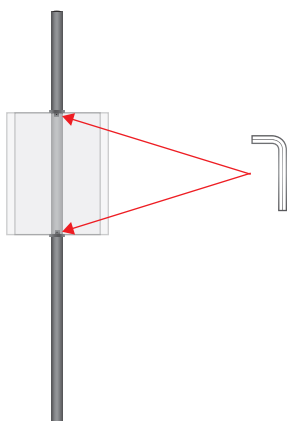
1. Join the circular base to the vertical pole, fixing the parts with the screw and Allen key supplied.



2. Insert the lower ring at the desired height keeping the shaping facing upwards then block by acting on the bolt present



3. Insert the communication pocket into the shaping of the previously mounted ring, then lock by inserting the upper ring with the shaping facing downwards



4. Use the Allen key on the front nuts to secure the communication holder to the supports



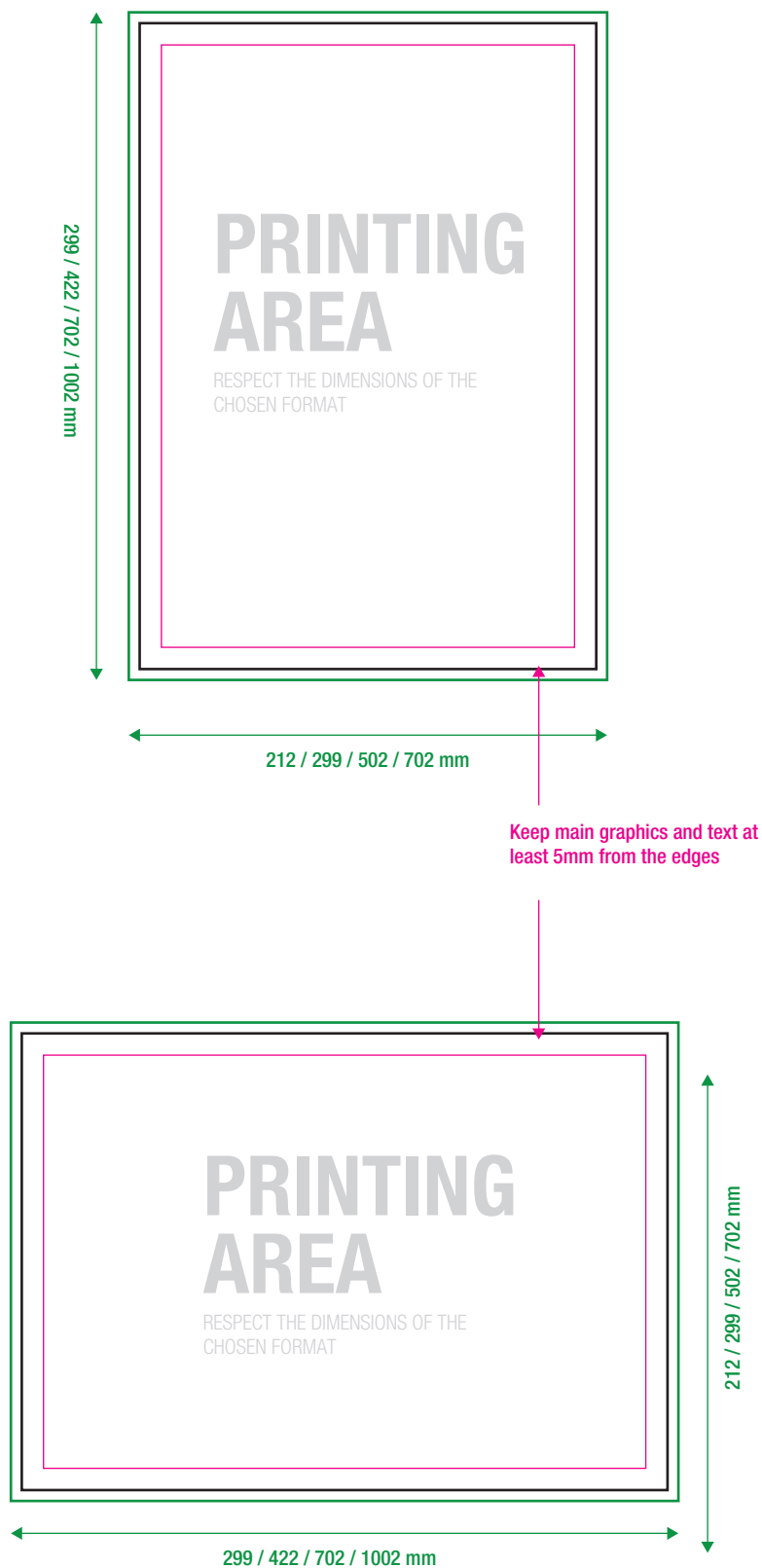
5. Insert the printout into the communication holder

NOTE:

DNA lectern can be set up with multiple communication ports according to needs.



youtube.com/StudioStandSrl
for the assembly video tutorial



- **ABUNDANCE**
- **CUT**
- **SAFETY MARGIN**
(Do not place important content beyond this margin))

INFO FILE

Formats: .eps .pdf .jpg .tiff
 Color profile: CMYK
 Images: 100dpi - 1000dpi (for 1:10 scale files)
 Fonts: converted into paths
 Die path: only cutting path (where present)