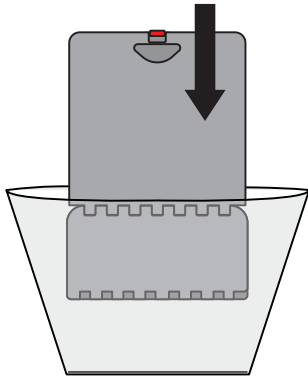
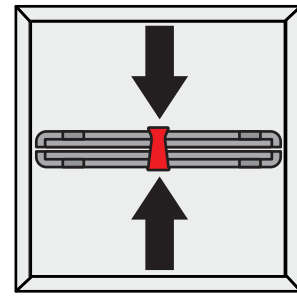


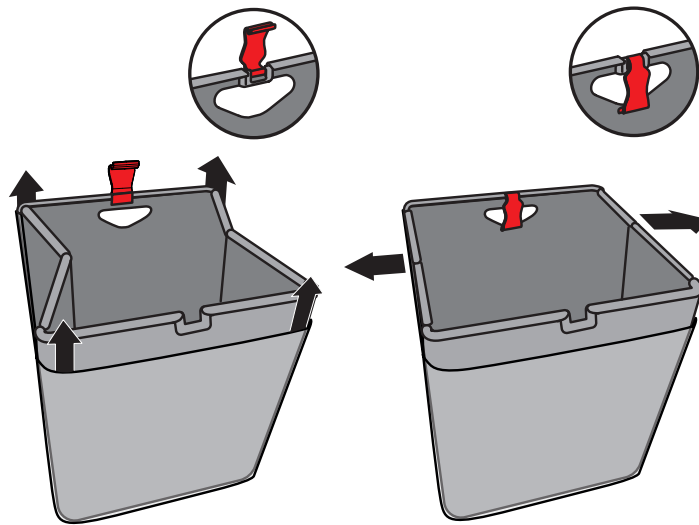
ASSEMBLY INSTRUCTIONS



1 insert closed Flatcube into the print



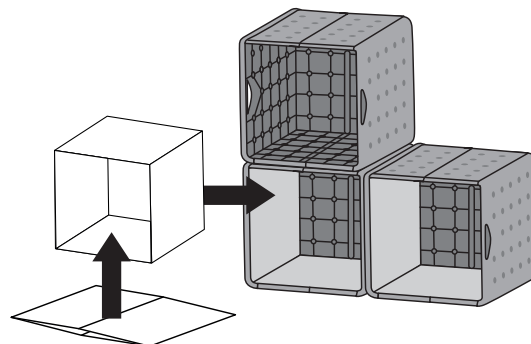
2 position Flatcube centrally



3 release the red hook and open the structure entirely to tension the print, then lock in position by closing the red hook



4 position the seat according to your needs - max load 185kg



It is possible to join multiple flatcubes together
NOTE - do not join more than 3 flatcubes vertically

INFO FILE

Formats:

.eps .pdf .jpg .tiff

Color profile:

CMYK

Images:

included within the file at at least 100dpi resolution in 1:1 scale or 1000dpi for 1:10 scale works

Fonts:

converted into paths

Die path:

Keep ONLY the outermost path - all other paths must be removed

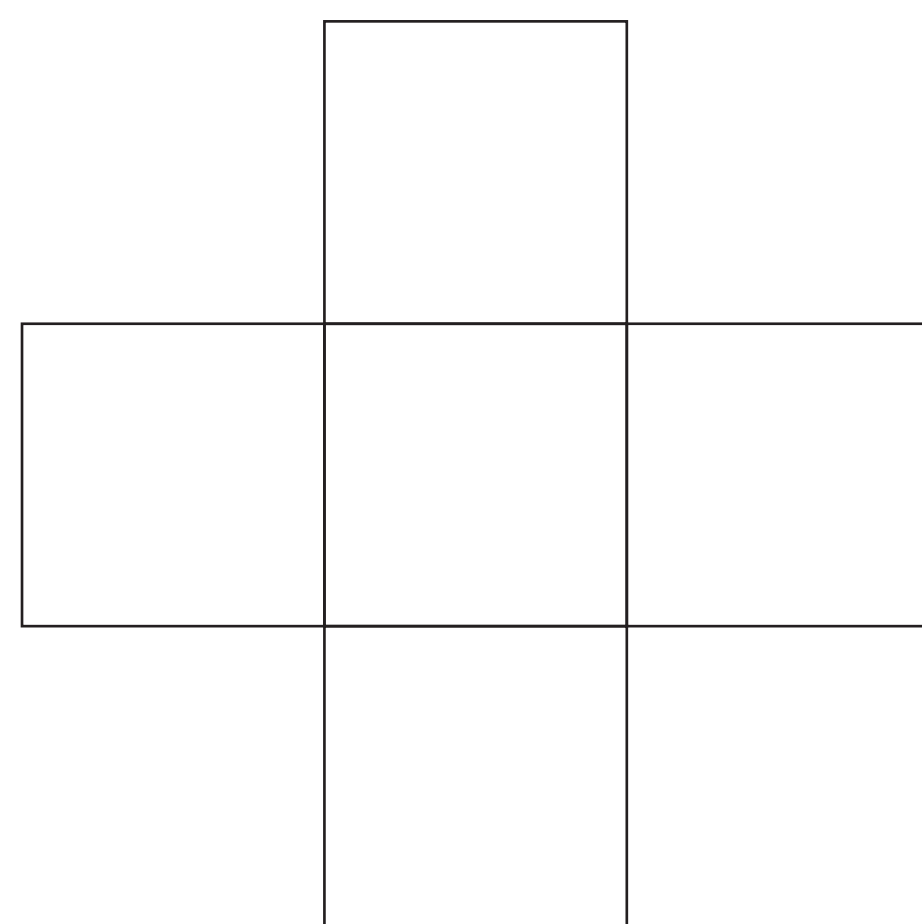
Crop marks/register/color bars/file info:

DO NOT insert inside the file

————— **ABUNDANCE**

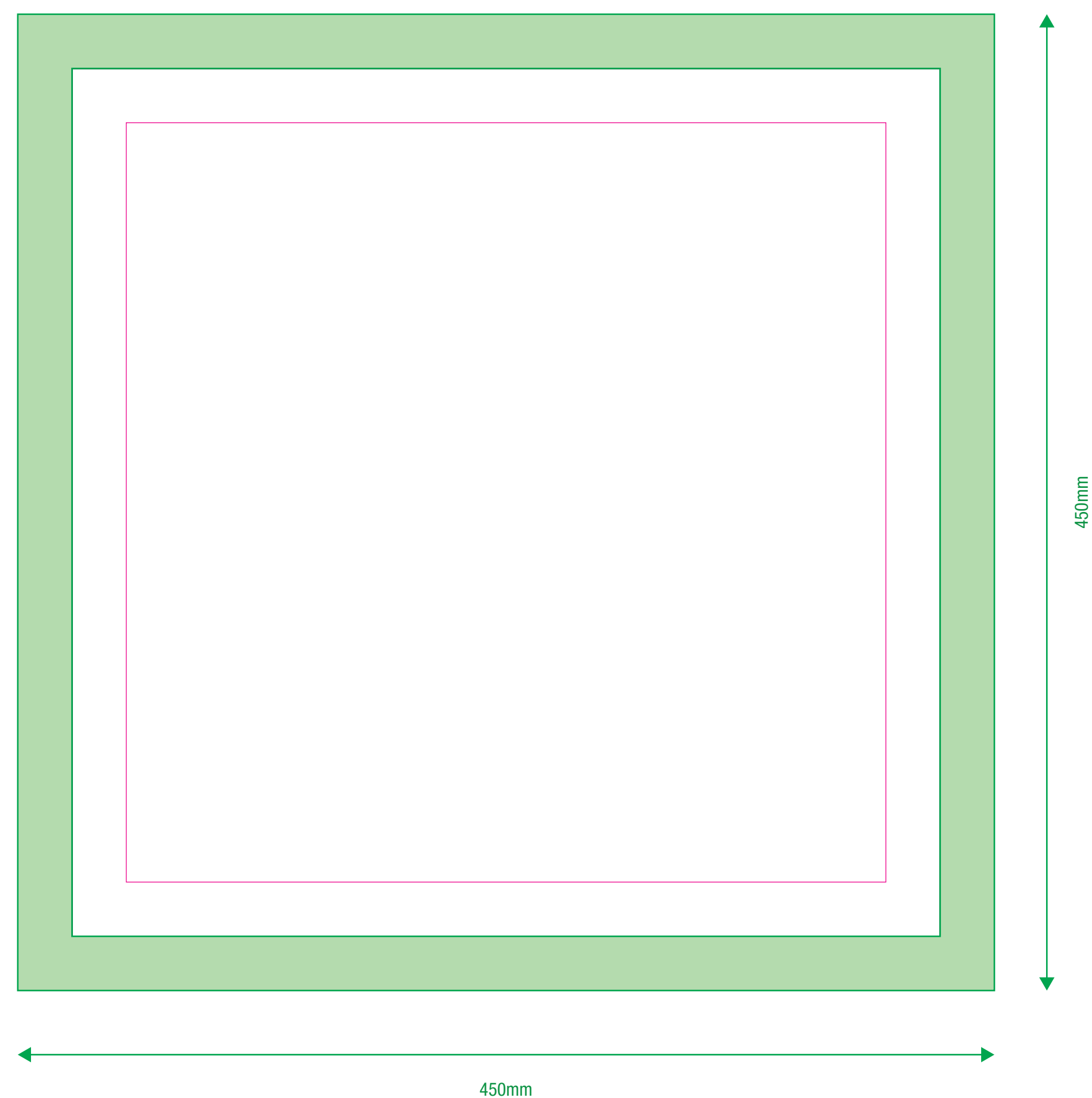
————— **CUT**

————— **SAFETY MARGIN**
(Do not place important content beyond this margin)

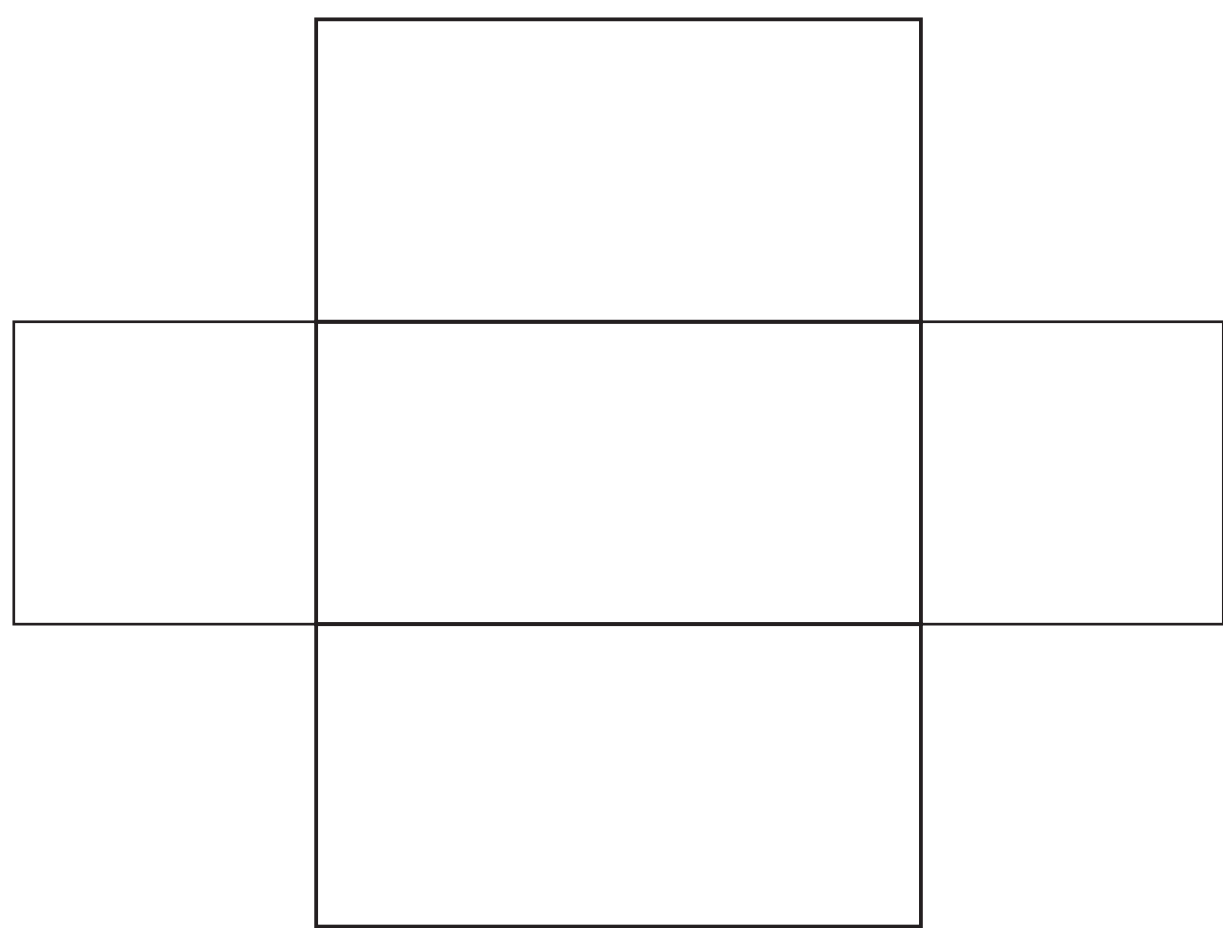


To compose standard flatCube
we need

nr. 5 layout

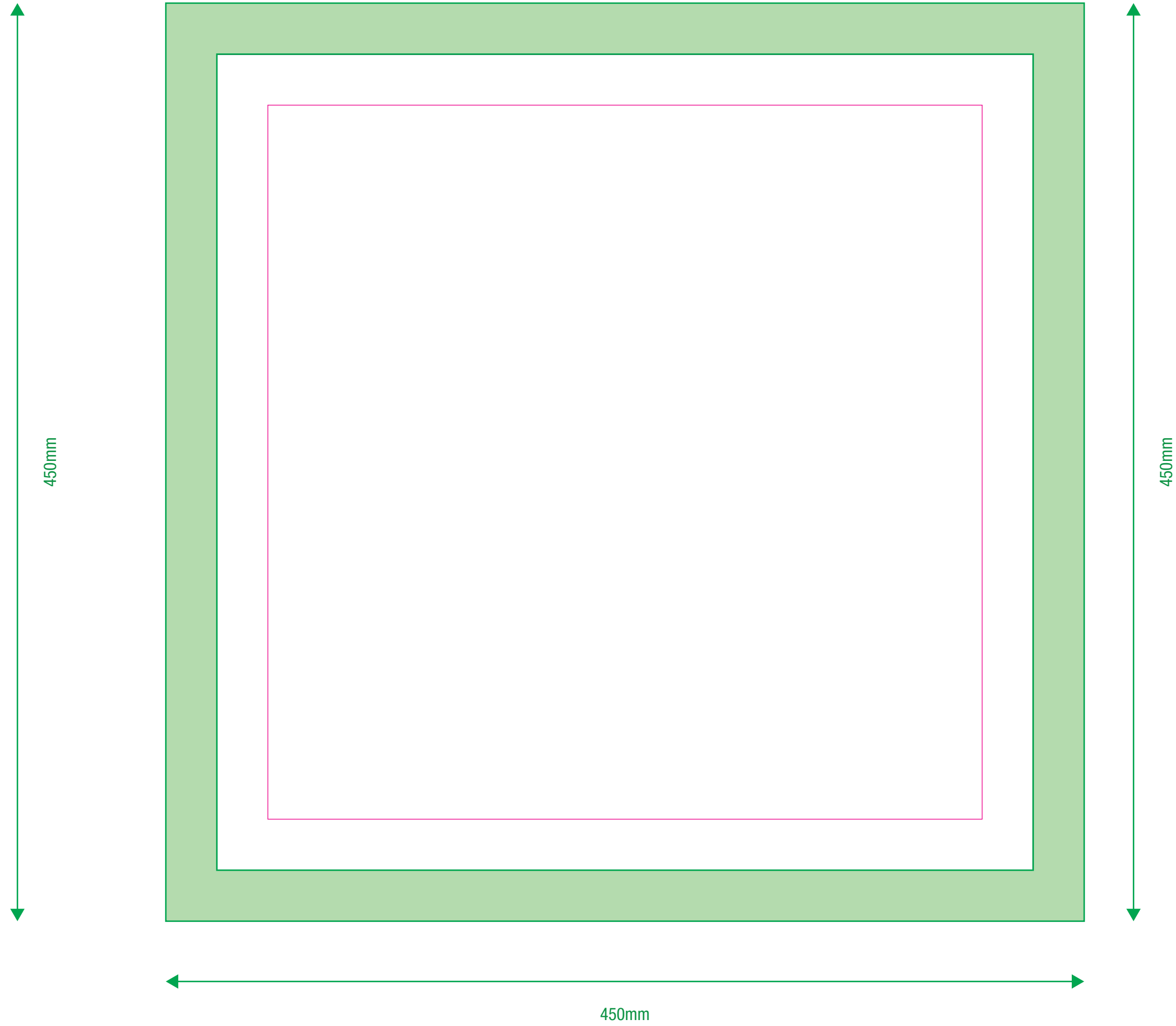
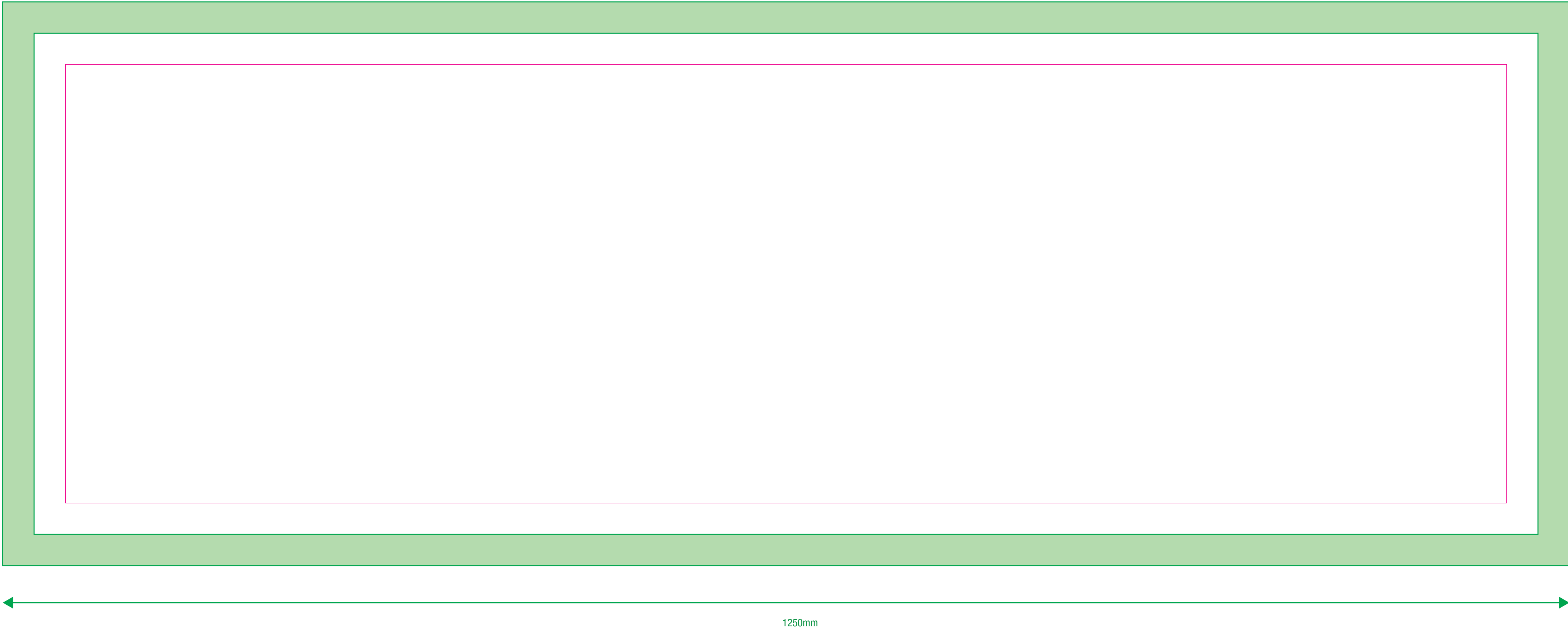


FLATCUBE - standard

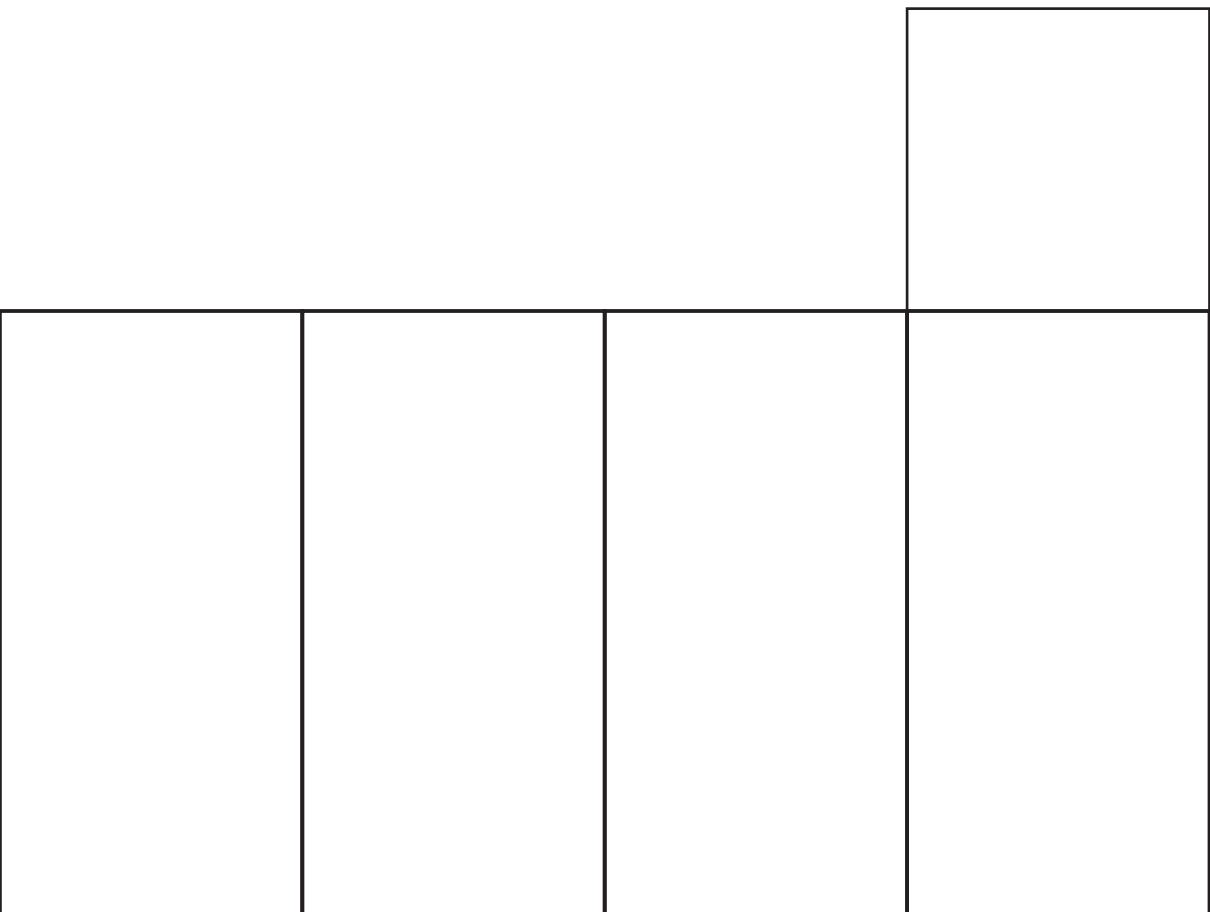


To compose flatCube Bench
we need

nr. 5 layout



FLATCUBE - bench



To compose flatCube - stool
we need

nr. 5 layout

