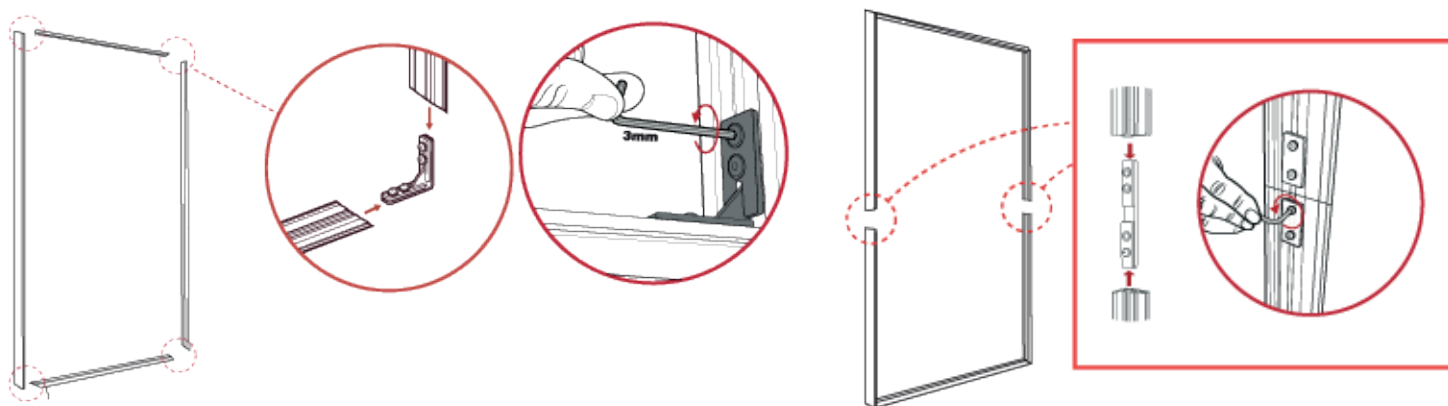
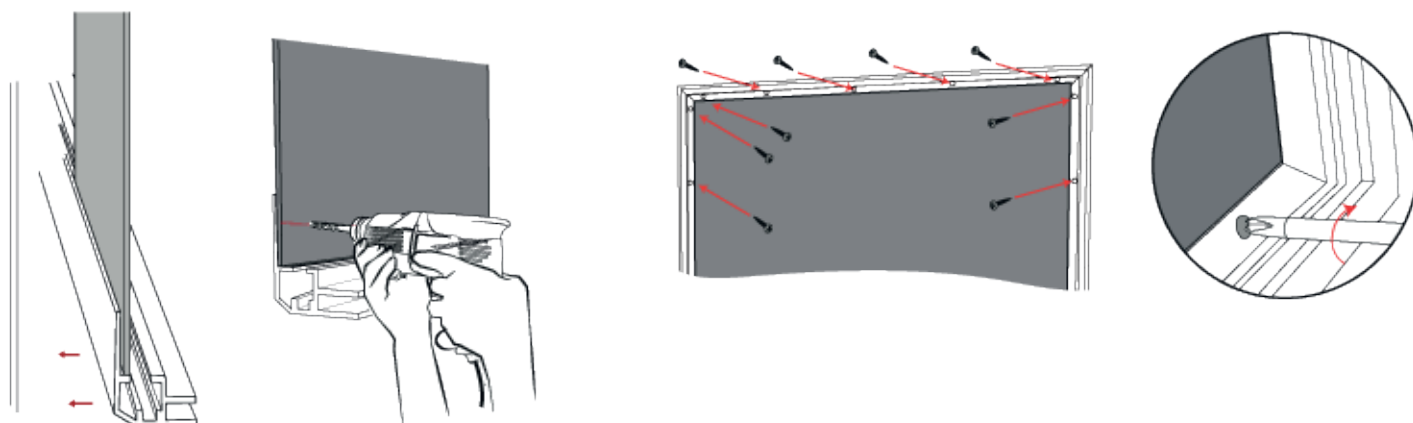


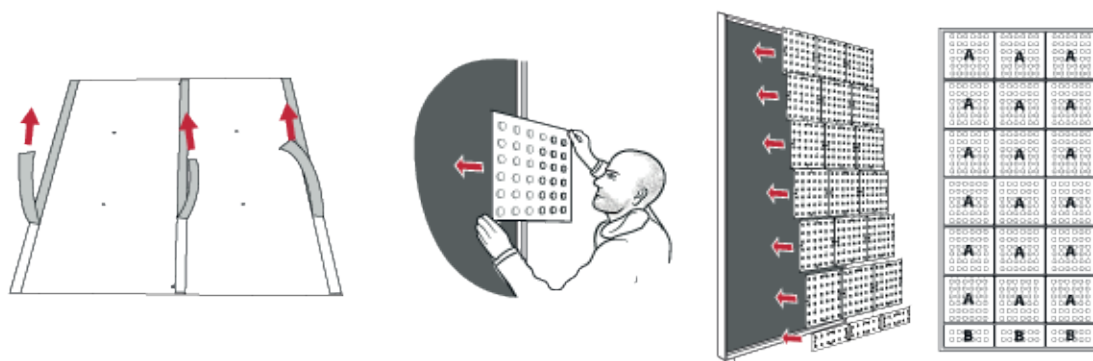
ASSEMBLY INSTRUCTIONS



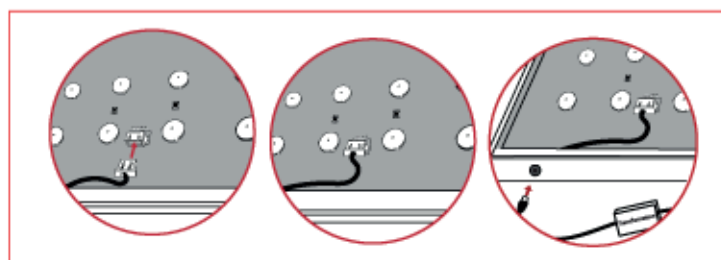
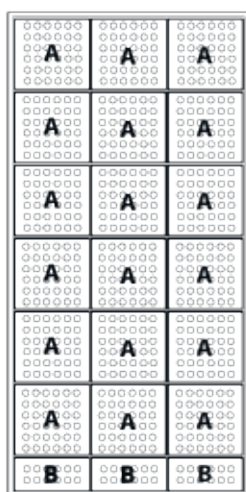
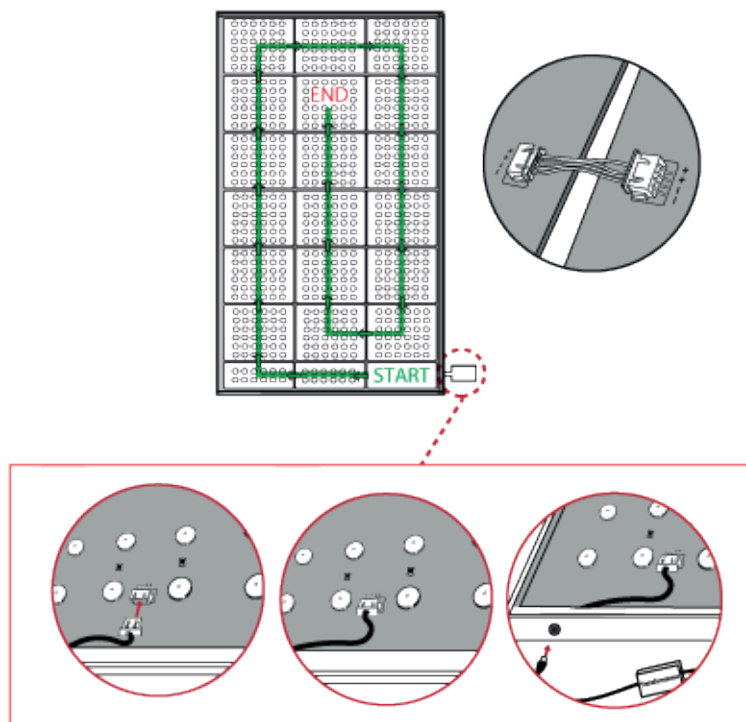
1. Join the profiles together with the appropriate fittings and lock with an Allen key



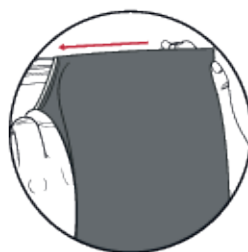
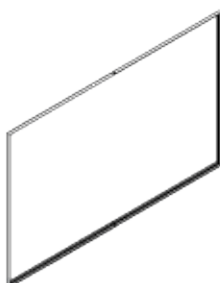
2. Position the panel (composite aluminum recommended material - the panel must be 25mm smaller than the frame) then secure to the wall using the self-tapping screws position in correspondence with the appropriate holes on the profiles



3. Apply the LED backlight modules to the panel using the double-sided tape on the back of the modules

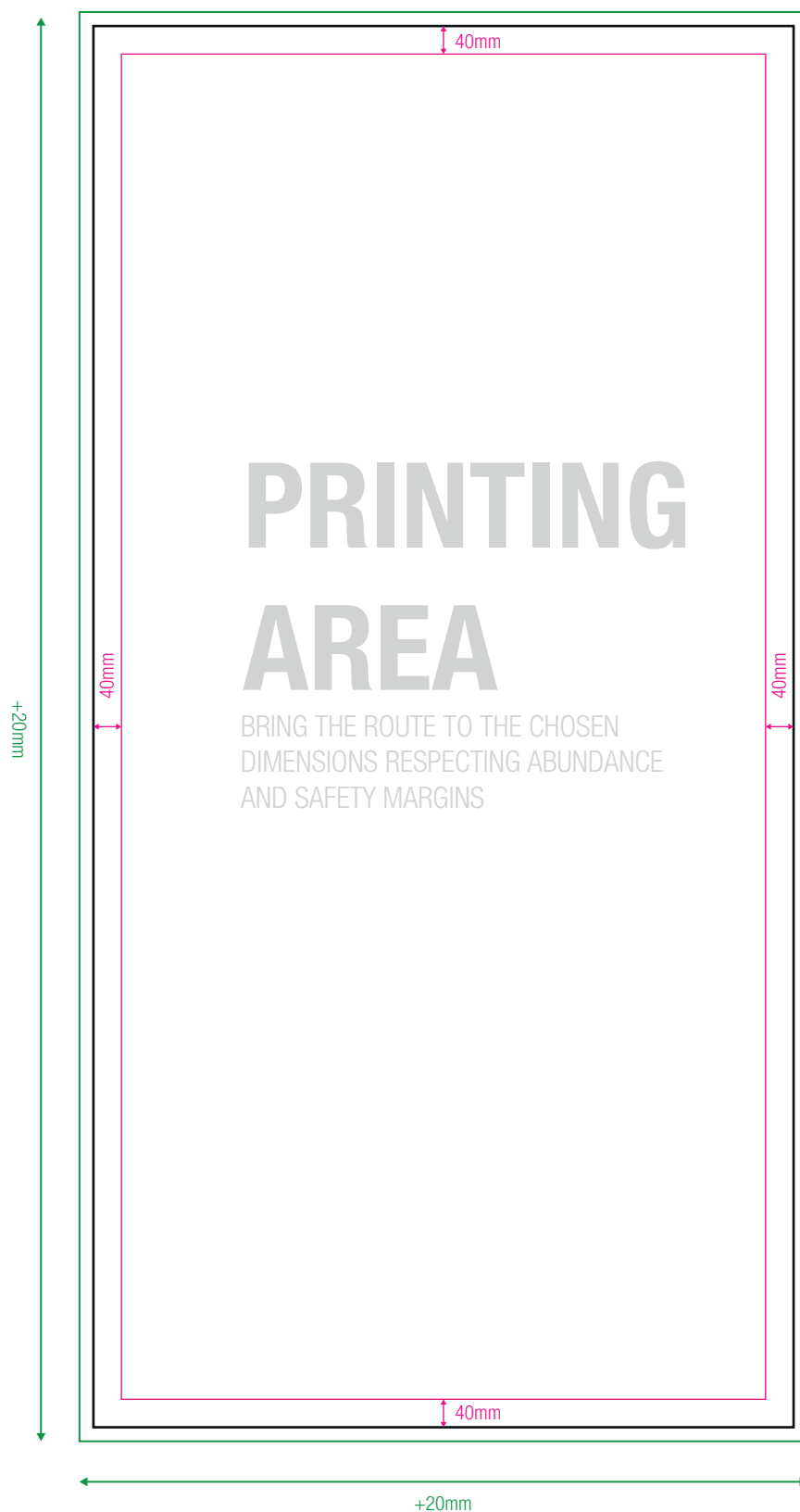


5. Connect the power supply



6. Apply the print with silicone profile to the structure

PRINTING INSTRUCTIONS - example for 1000x2000mm printing



- ABUNDANCE**
- CUT**
- SAFETY MARGIN**
(Do not place important content beyond this margin))

INFO FILE

Formats: .eps .pdf .jpg .tiff
Color profile: CMYK
Images: 100dpi - 1000dpi (for 1:10 scale files)
Fonts: converted into paths
Die path: only cutting path (where present)