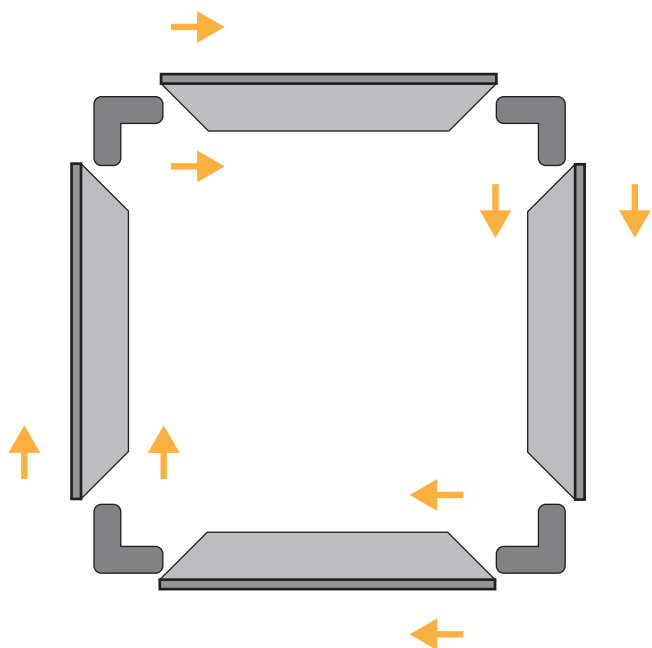
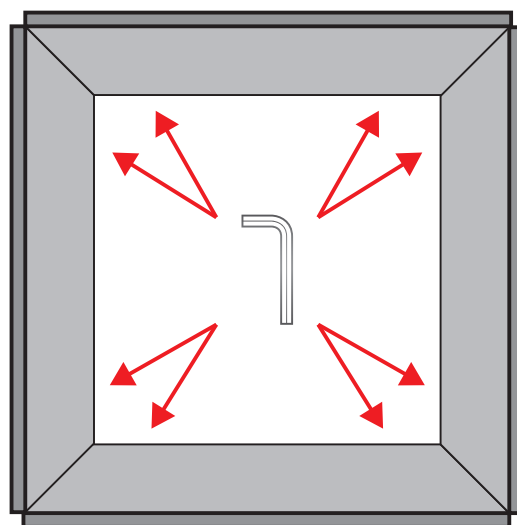


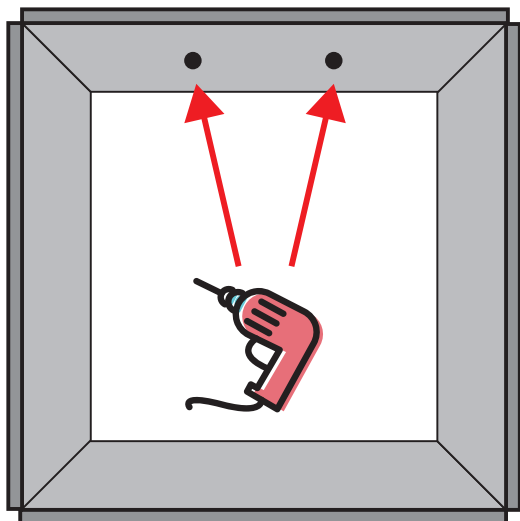
ASSEMBLY INSTRUCTIONS



1. Insert the interlocking fittings into the components to form the frame



2. Use an Allen key to tighten the nuts on the fittings



3. Using a drill, make holes in the structure for wall mounting.



4. Apply the print to the structure by inserting the silicone profile into the appropriate shaping of the structure



youtube.com/StudioStandSrl
for the assembly video tutorial

PRESS INSTRUCTIONS



AVAILABLE FORMATS:

700x1000 mm

1000x1000 mm

1000x1400 mm

1000x2000 mm

- ABUNDANCE
- CUT
- SAFETY MARGIN
(Do not place important content
beyond this margin))

INFO FILE

Formats: .eps .pdf .jpg .tiff

Color profile: CMYK

Images: 100dpi - 1000dpi (for 1:10 scale files)

Fonts: converted into paths

Die path: only cutting path (where present)